



**ZANTIA**<sup>®</sup>

Inspired by *Comfort!*

# Wi-Fi USER MANUAL



*ALL-IN-ONE HEAT PUMP - DOMESTIC HOT WATER*

# REGINA SMART

*200L | 300L | 500L*

Thank you for purchasing our product. Read this manual carefully before installing or operating your new pellet boiler. Make sure to save this manual for future reference.

# WIFI User Manual

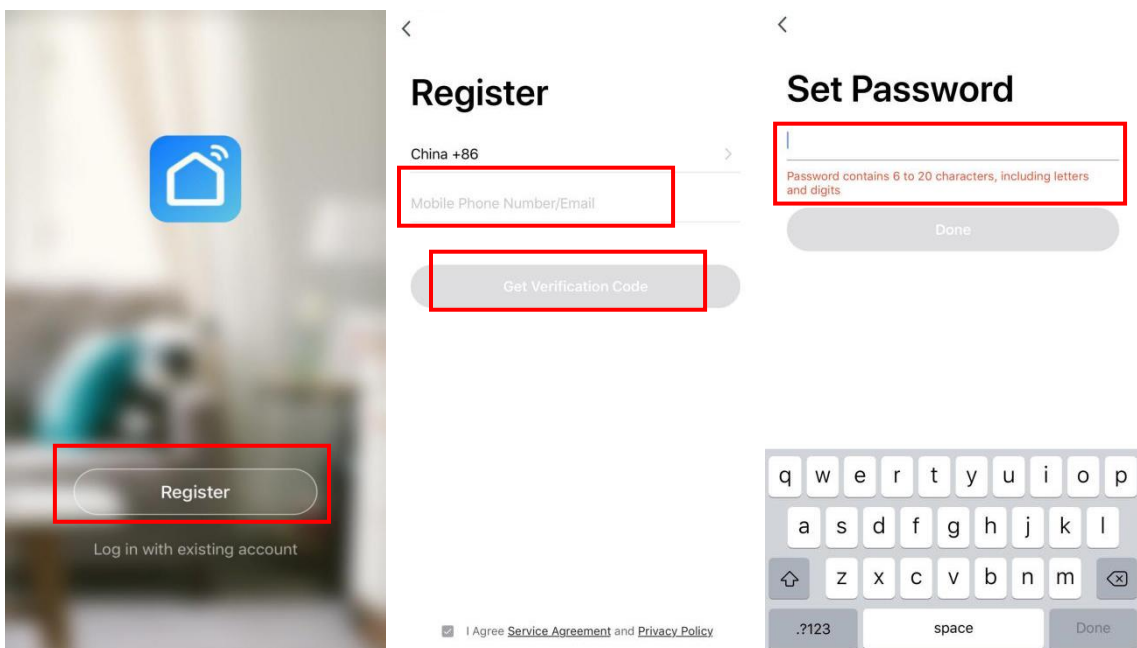
## 1. APP download

Go to APP store or Google market and search “Smart Life”, download and install the APP, then start it.



## 2. Register

- If you are new user, you will need registering: Register → Input your mobile phone number → Get verification code → Input the verification code → Set the password → Complete.

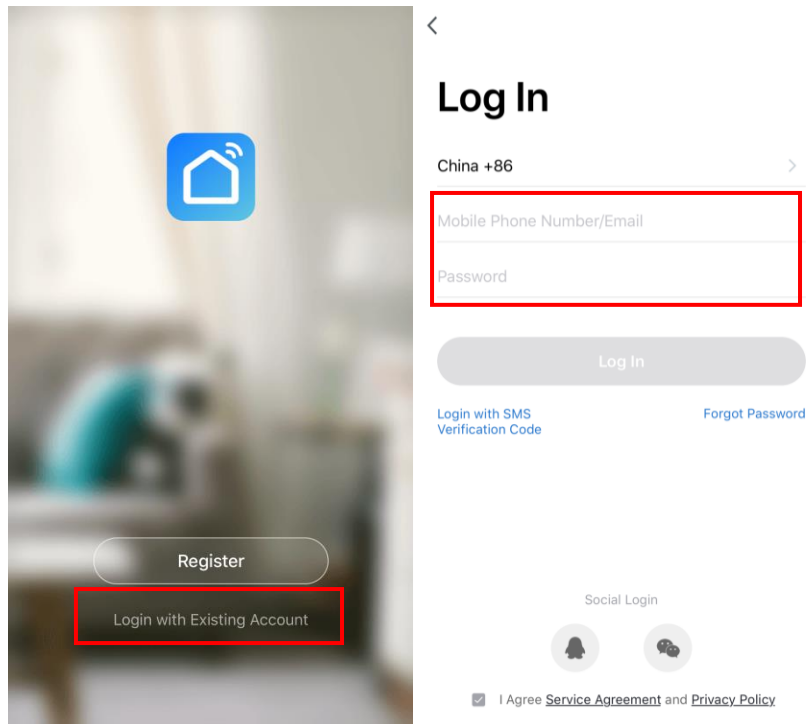


- After registering, then create family: Create family → Input family name → Input family location → add room → complete;

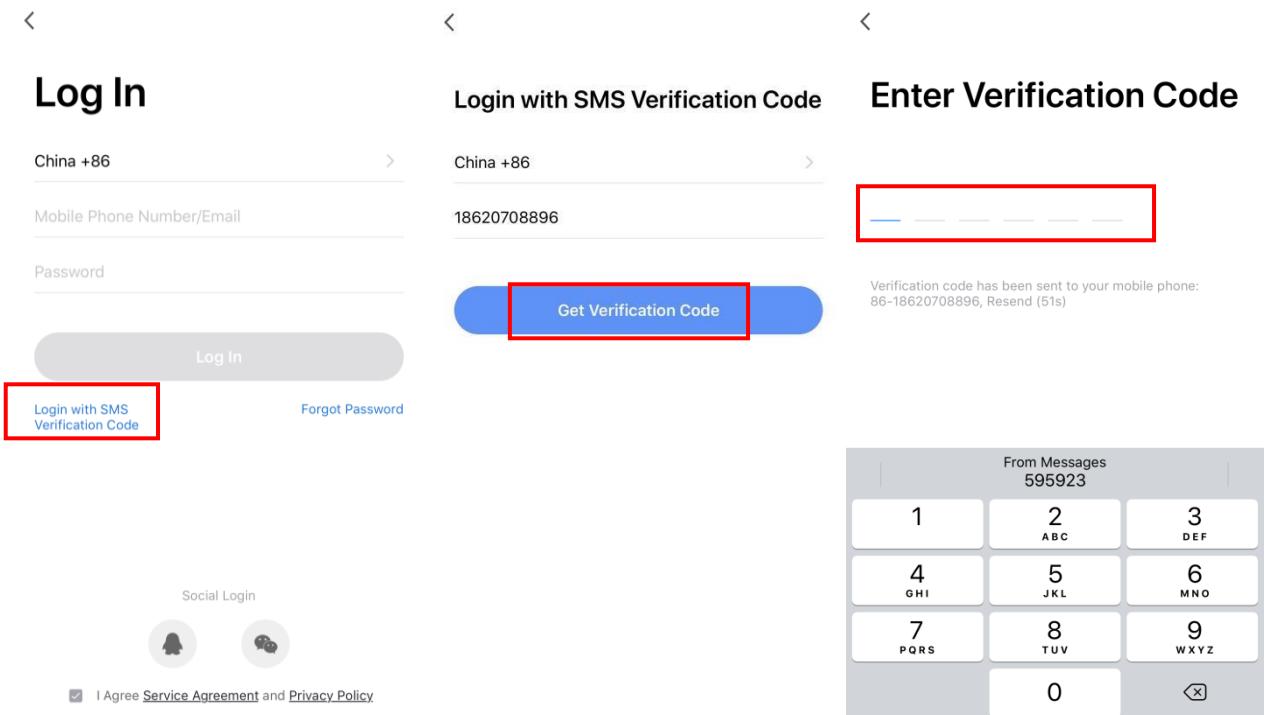
The image shows two side-by-side screenshots from a mobile application. The left screenshot is a landing page titled "Turn on your smart life" with a blue "Create family" button and a "Log out" link at the bottom. The right screenshot shows the "Add family" setup screen. At the top, there are three buttons: "Cancel", "Add family", and "Comple...", where "Comple..." is highlighted with a red box and a red arrow. Below the buttons are two input fields: "Family name" with the placeholder "Fill in name of family" and "Family location" with the placeholder "Set geographic location" and a right-pointing chevron. Underneath is a section titled "Smart devices in rooms:" containing a list of rooms, each with a checked checkbox: Living Room, Bedroom, Second Bedroom, Dining Room, Kitchen, and Study Room. At the bottom of this list is a blue link "Add another room". A grey footer note at the very bottom of the right screenshot reads: "Afterwards, you can change the room settings at any time".

### 3. Login

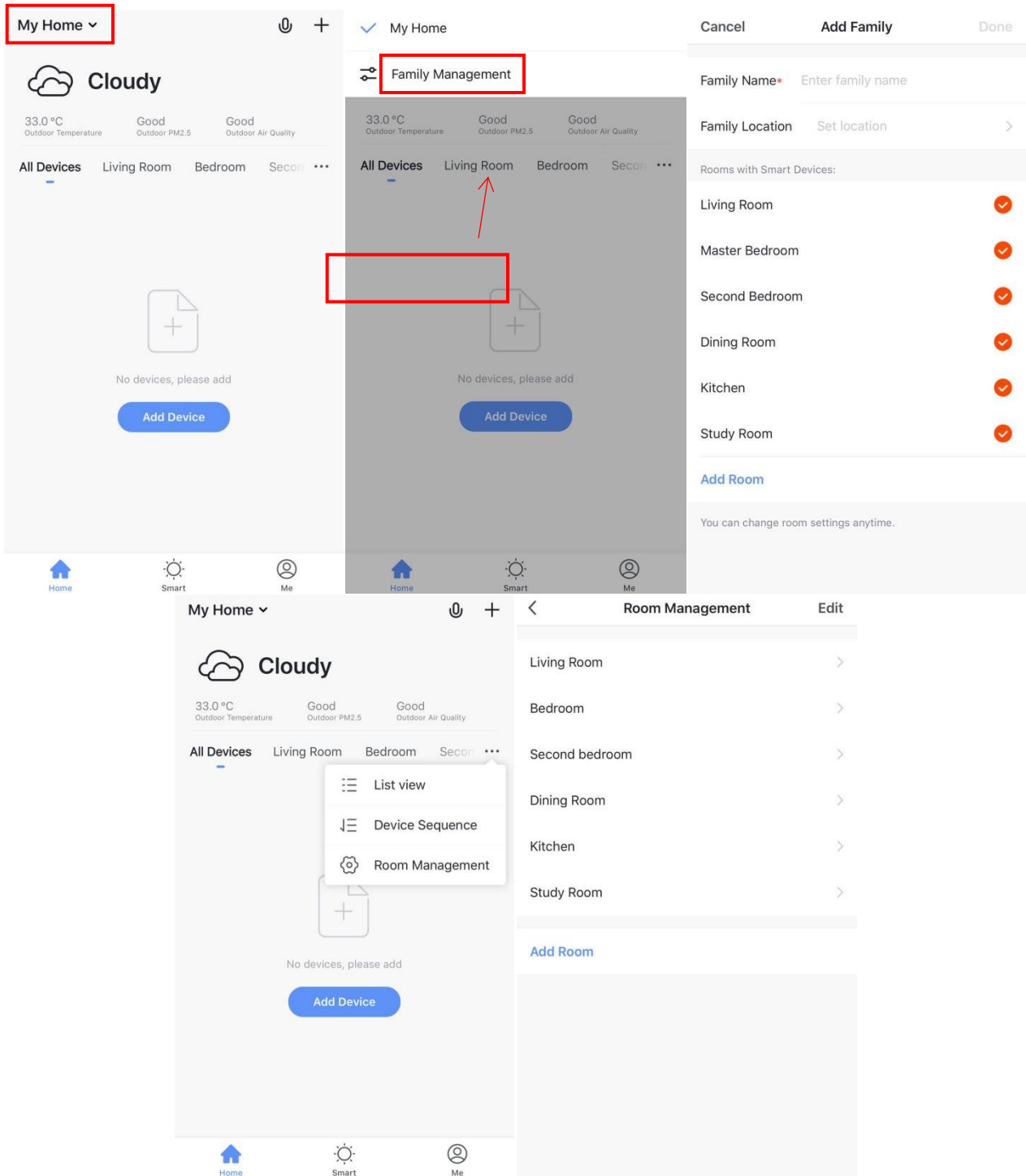
- 1) Login with existing account.



- 2) If you have forgotten your password, you can select the verification code to log in. Select “Login with SMS Verification Code”, input the mobile phone number, and click “Get Verification Code”, then input the verification code you got by SMS.







- 3) After creating a family or logging in, enter the smart life app interface, can do family or room management as below pictures shown.






#### 4. WIFI Module Configuration Step:

- Method 1 (Intelligent network connection mode):

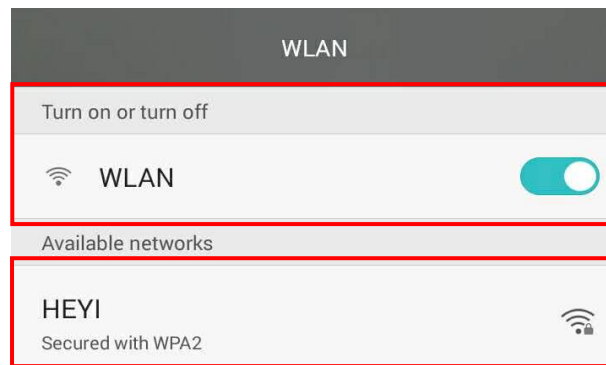
- ◆ Step 1:

Manually enter the intelligent network connection mode: press button “” and button “” on the controller for 5 seconds to enter the connection state, icon “” in the upper right corner will blink quickly, about 3 times in 1 second. After the WIFI module connecting with the network, the icon “” will not be displayed.

If the WIFI module doesn't connect with the network , after 3 minutes, the icon “” will stop blinking and not be displayed, and the intelligent network connection mode will exit. To re-enter the intelligent network connection mode, it need to press again the button “” and the “” button for 5 seconds;

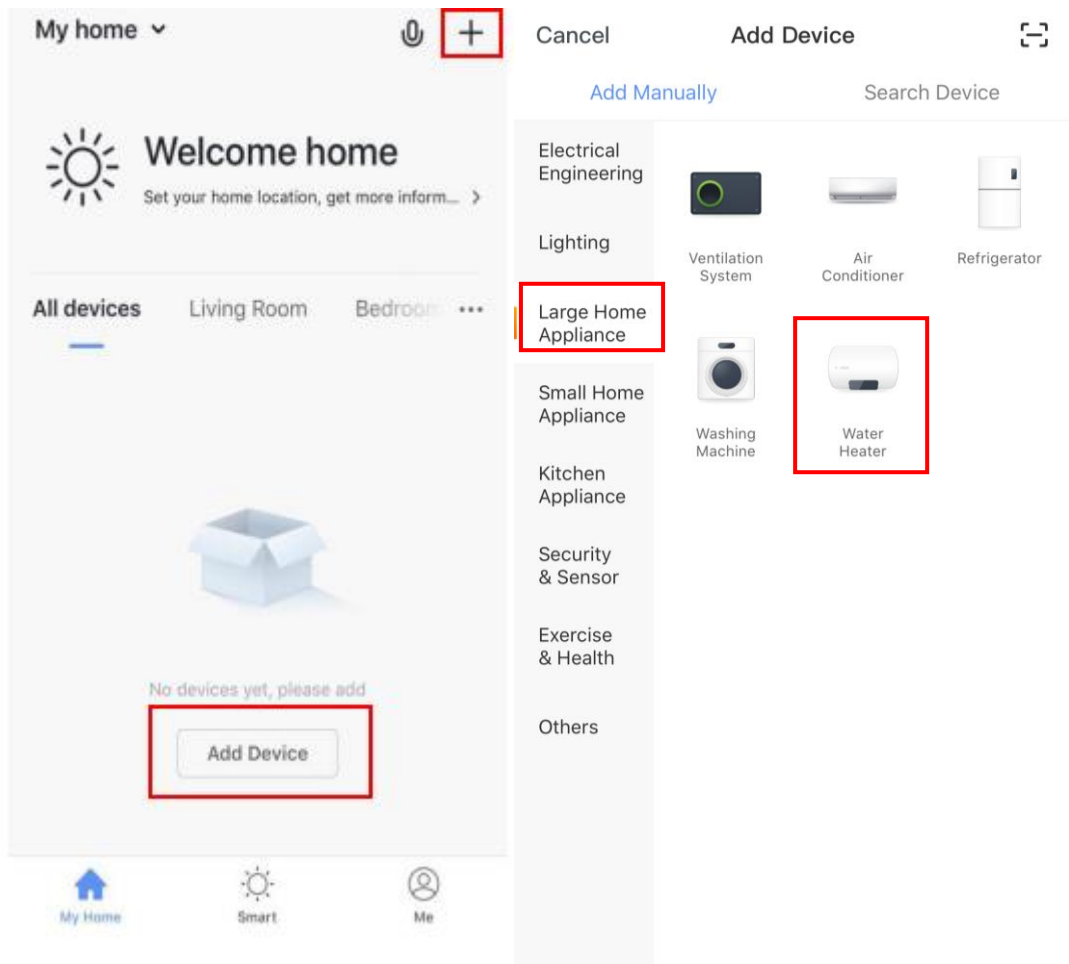
◆ **Step 2:**

Make your phone connect to WIFI at good network connection status.




◆ **Step 3:**

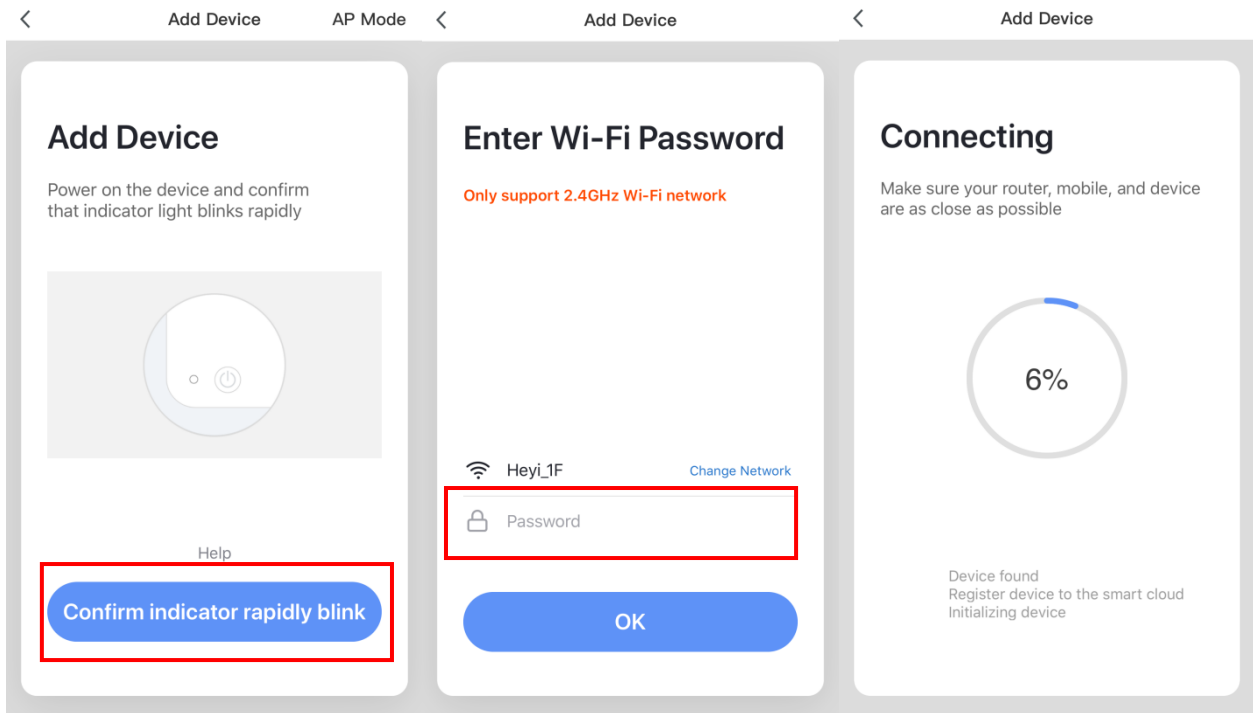
Open the “Smart Life” APP, enter into the main interface, click the button “+” in the top right corner or click the button “Add Device”, then click “All devices” in the top right corner and select the type device “Large Home Appliance” and select “Water Heater”, then enter into the interface of “Add Device”.



◆ **Step 4:**

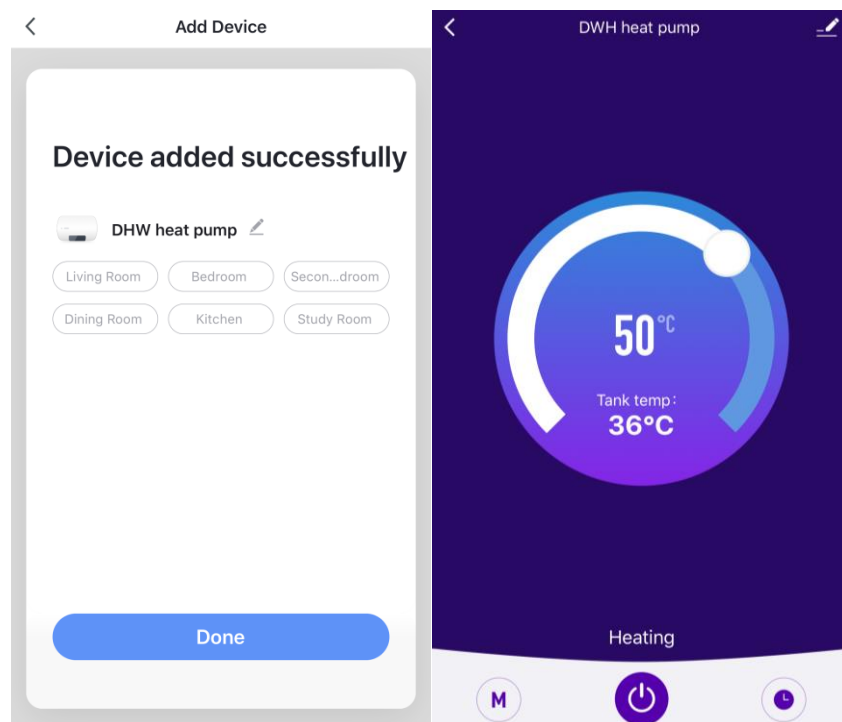
After entering the “Add Device” interface, please confirm that the controller has selected the intelligent network connection mode and the icon “” is blinking quickly, then click “Confirm the indicator rapidly blink”;

Enter into the WIFI connection interface, input the password of WIFI connected in the phone. Click “OK”, then enter into the device connection status, and wait for the loading of 100%.



◆ **Step 5:**





After the App successfully connect to the device, as below shown “Device added successfully”, you can change the the device name and set the installing location. Then click “Done”, it will enter into the device operation interface..








- **Method 2 (AP network connection mode) :**

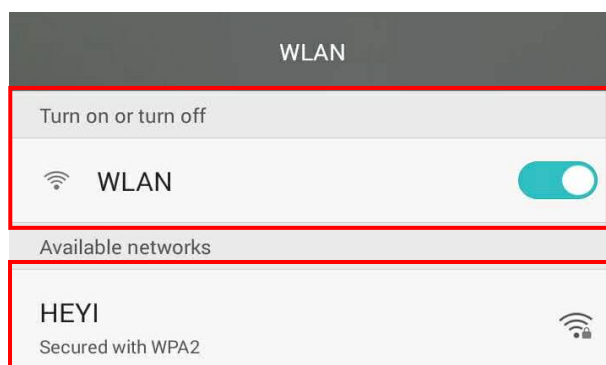
- ◆ **Step 1**

Press “▼”+“”+“” button on the controller for 5 seconds to enter the AP network connection mode, the icon “” in the upper right corner will blink. Then WIFI module can be ready to connect with network. After the WIFI module connecting with the network, the icon “” will not be displayed.

If the WIFI module doesn't connect with the network , after 3 minutes, the icon “” will stop blinking and not be displayed, and the AP network connection mode will exit. To enter the AP network connection mode, it need to press again the button “▼”+“”+“” on the controller for 5 seconds.

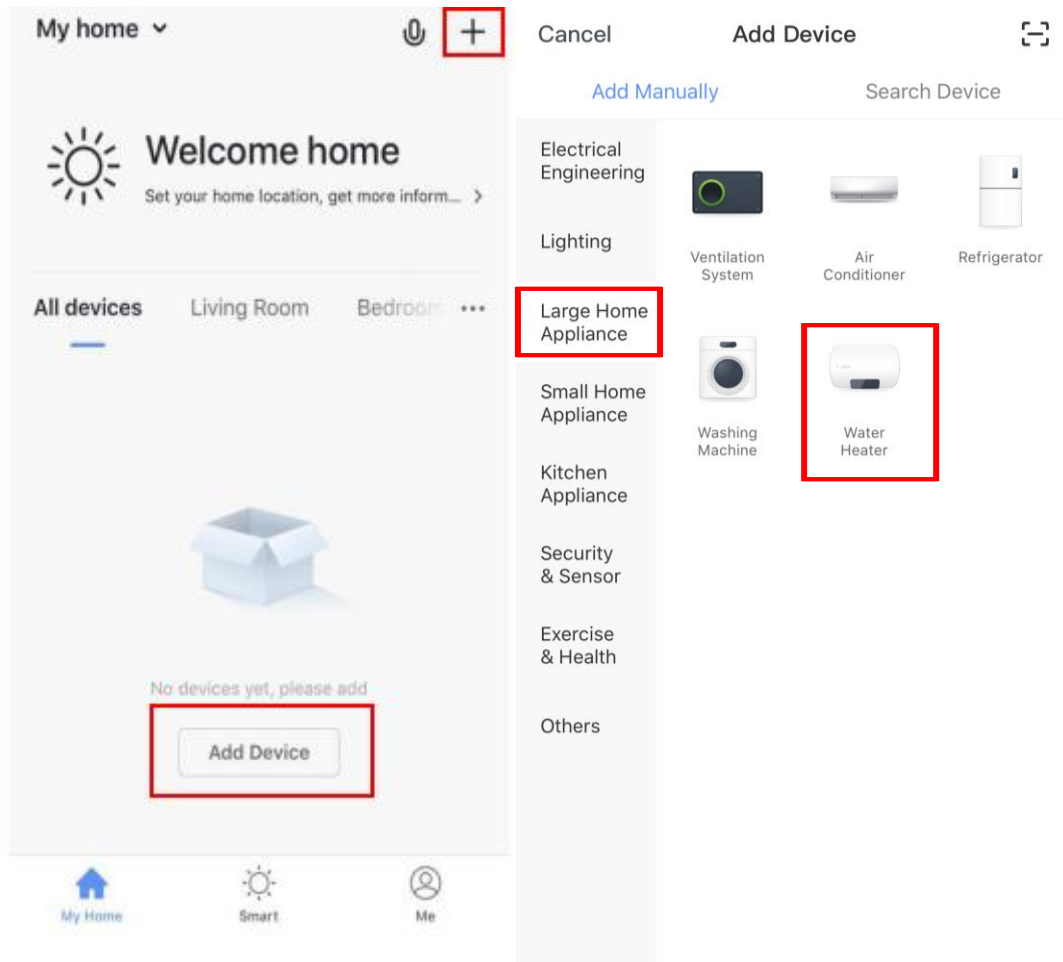
- ◆ **Step 2:**

Make your phone connect to WIFI at good network connection status.




- ◆ **Step 3:**

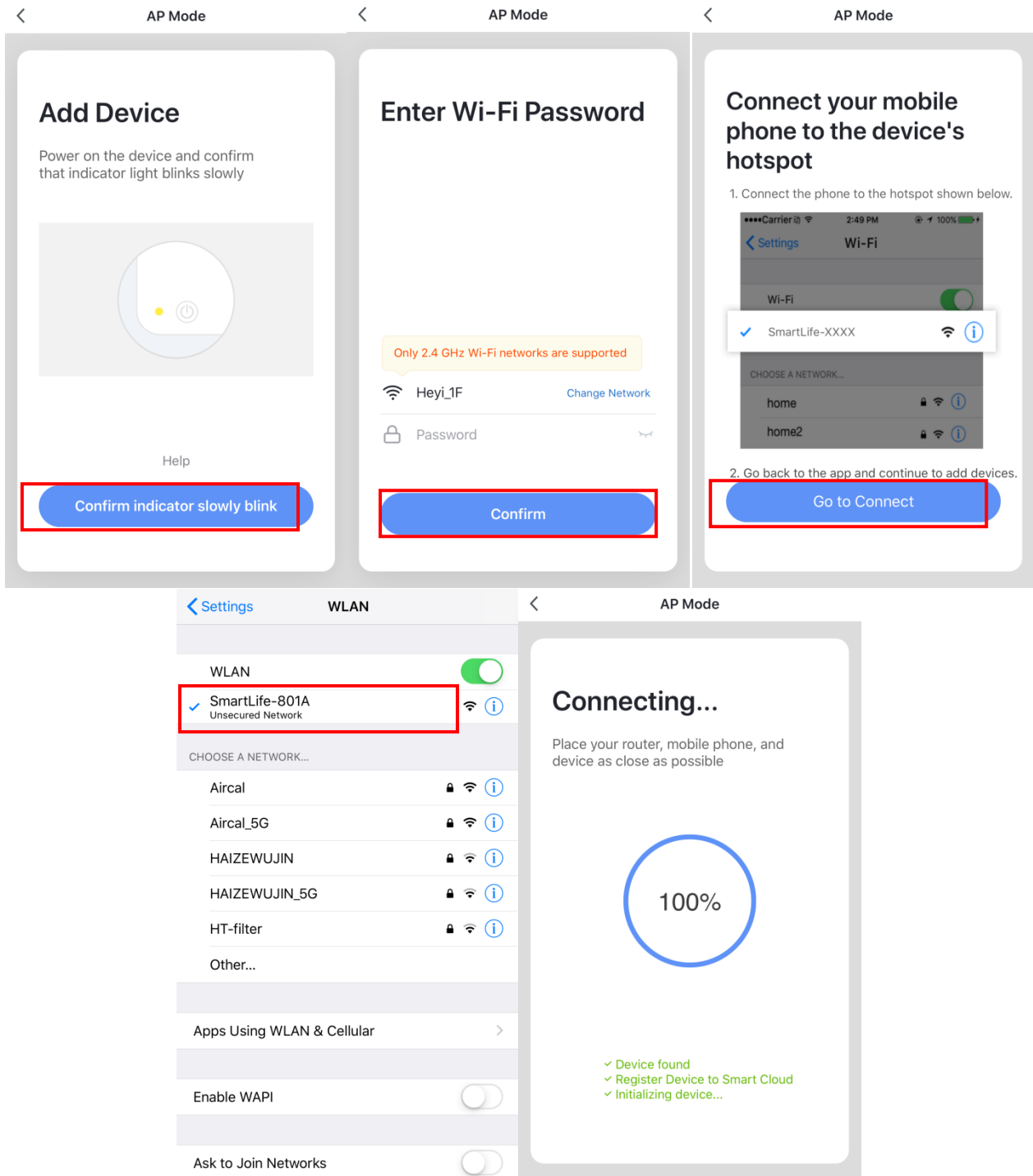
Open the “Smart Life” APP, enter into the main interface, click the button “+” in the top right corner or click the button “Add Device”, then click “All devices” in the top right corner and select the type device “Large Home Appliance” and select “Water Heater”, then enter into the interface of “Add Device”.



◆ **Step 4:**

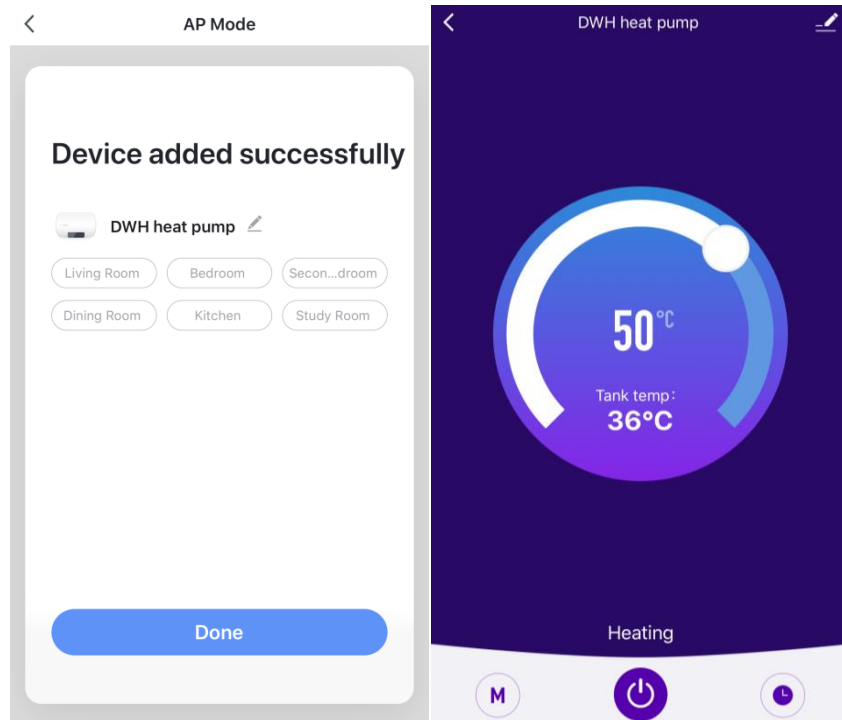
Enter the interface of “Add device”, click “AP Mode” in the top right corner, it will enter interface of “Add Device” under AP mode. Confirm the controller to select the AP network connection mode ( icon“”is in blinking), click “Confirm indicator slowly blink”. Then it will Pop up the WIFI connection interface, input the WIFI password which must be the same as the password of WIFI connected to the phone, click “confirm”, then it will pop up “connect your mobile phone to the device’s hot spot”, click “Go connect”. It will enter into the connection interface of phone WIFI, connect the “SmartLife-XXX”, as per picture shown:

SmartLife-801A. After connected successfully, return “Smart Life” APP, the APP will enter into the device connection status automatically, it will complete until the loading up to 100%.



◆ **Step 5:**

After the App successfully connect to the device, as below shown “Device added successfully”, you can change the the device name and set the installing location. Then click “Done”, it will enter into the device operation interface.



**Note:** If the connection fails, you can manually enter the AP network connection mode again, and reconnect according to the above steps.

## 5. APP Function Operation

After the device is successfully added, the user can enter into the device operation interface by going to the main interface and clicking the added device, then below functions can be operated.

**Return** →

**Failure alert:** if any failure happened, it will alert. → **Current failure alert: E03 Over heat protection**

**Edit:** can edit device name, select device location, check device network, share device, create group, view device information, feedback, check for firmware update and etc. →

**Desired temperature adjustment:** the white circle slides counterclockwise to reduce the temperature, and the clockwise slide →

**Desired heating temperature** → **50°C**

**Temperature in the top part of the tank** → **Tank temp: 34°C**


**Current operating mode** → **Heating**

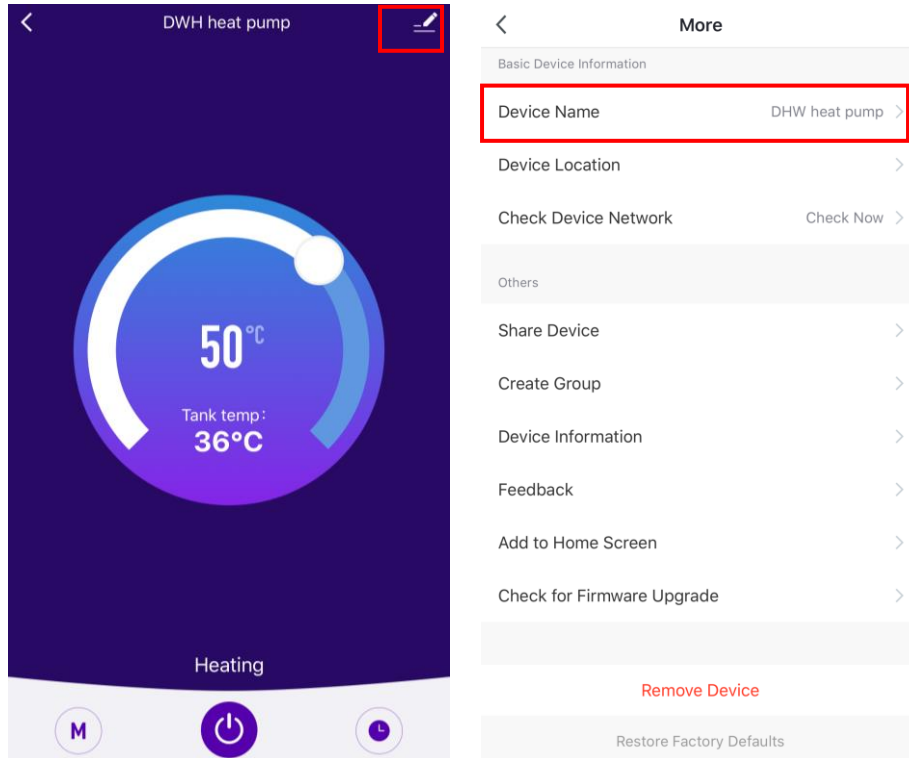
**Mode switching:** Click to select heating mode or heating+fan mode →

**On/off:** click to turn on/off →

**Timing:** Click to add timed on/off time →

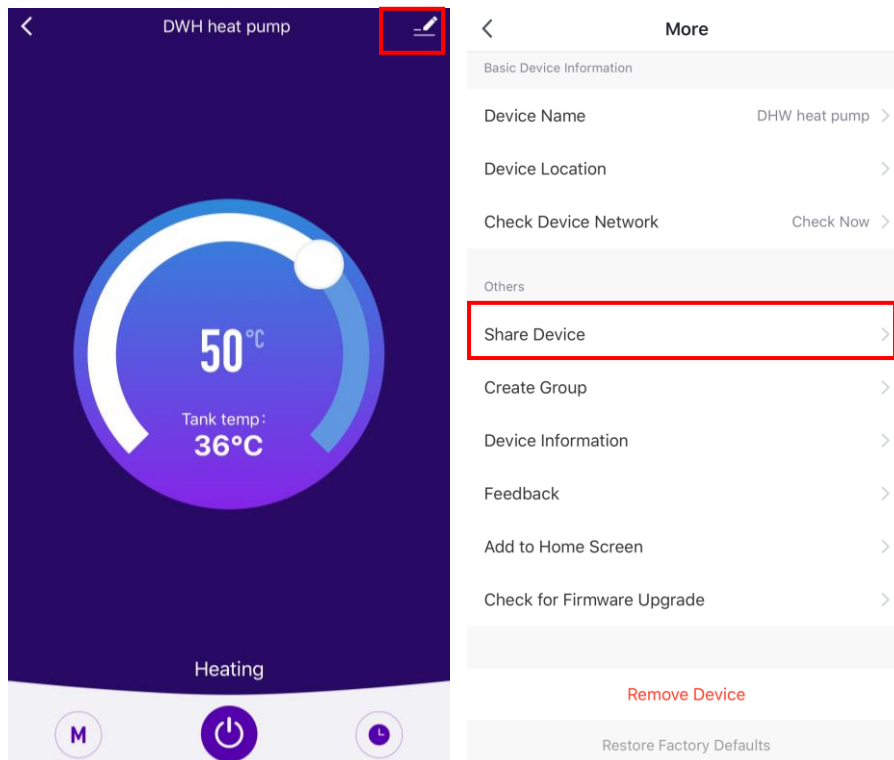
- **Modify the device name**

Click button  and click “Device Name”, can modify the device name.

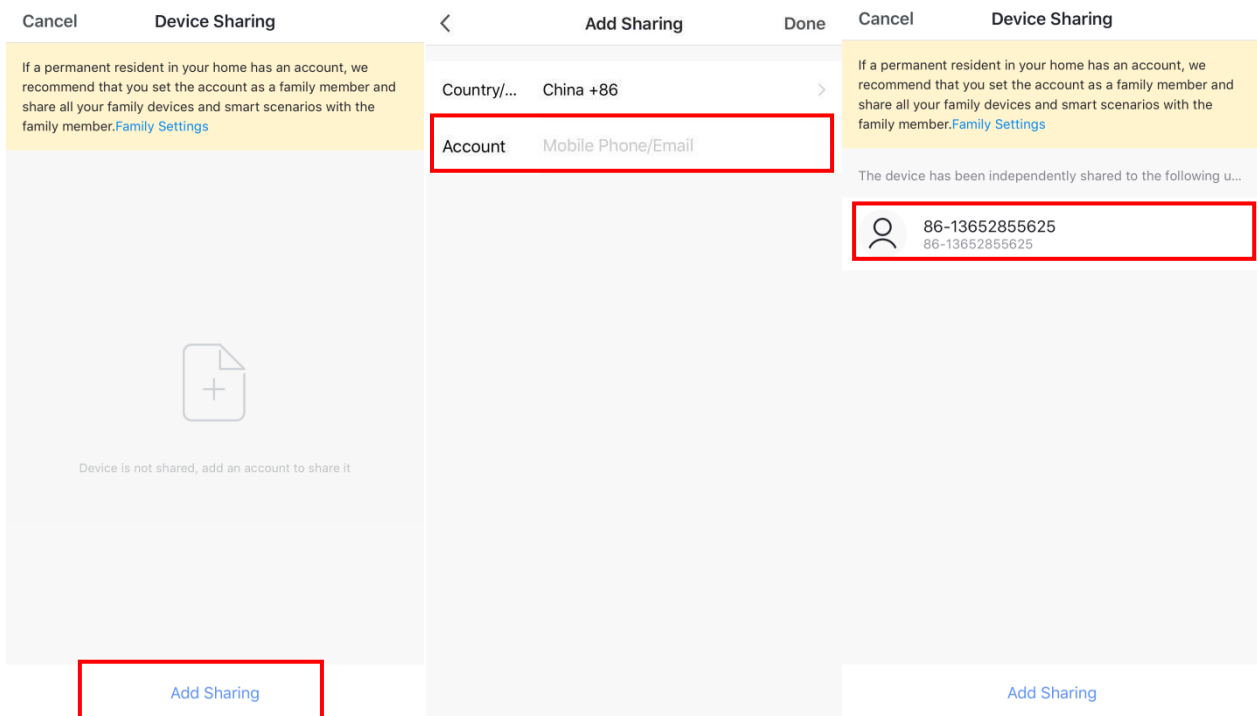


- **Share device**

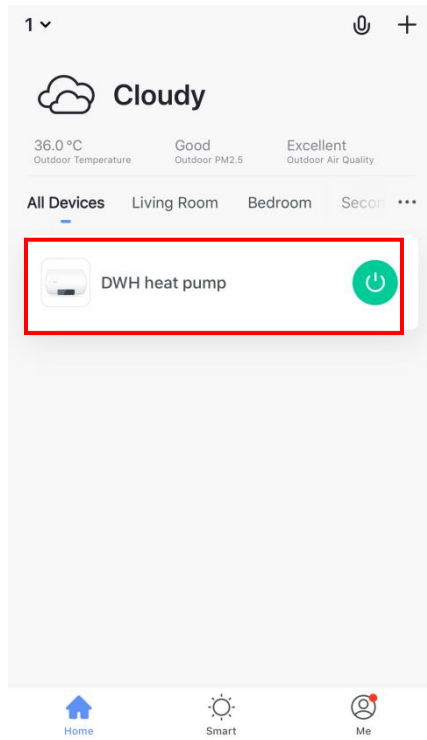
1) Click button  and click “Share Device”, can share device to other users' account.




2) Click “Add Sharing” and input the shared account and click “Finish”. The sharing success list shows the newly added account.



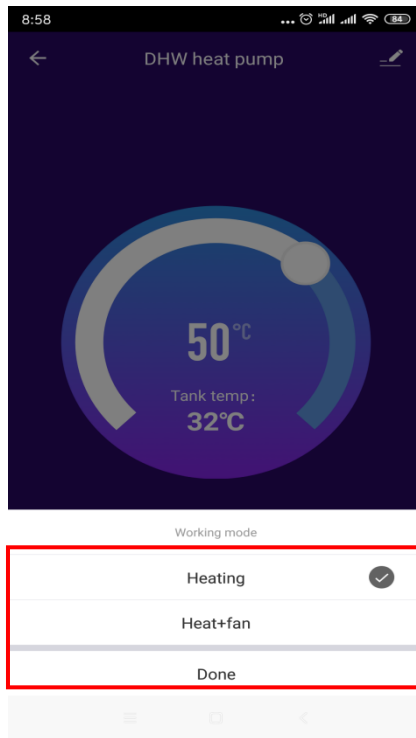
3) The shared account will receive the shared device shown as below, and he can operate the shared device.



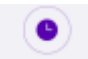
- **Mode setting**

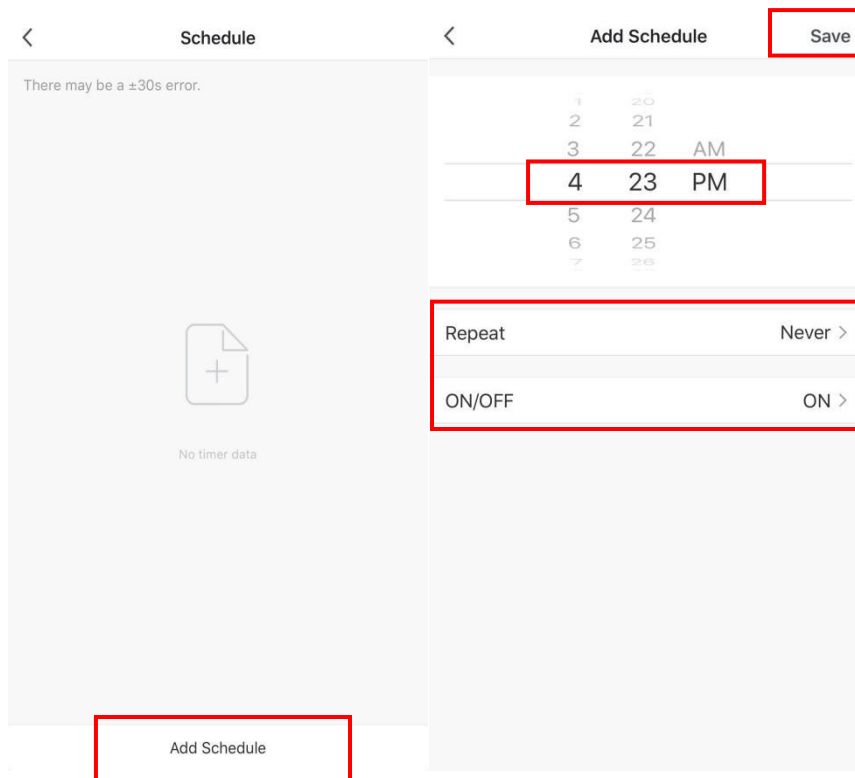
Click “” mode switch in the main interface of the device operation, the mode selection interface will pop up as shown below, click the mode you want to select;

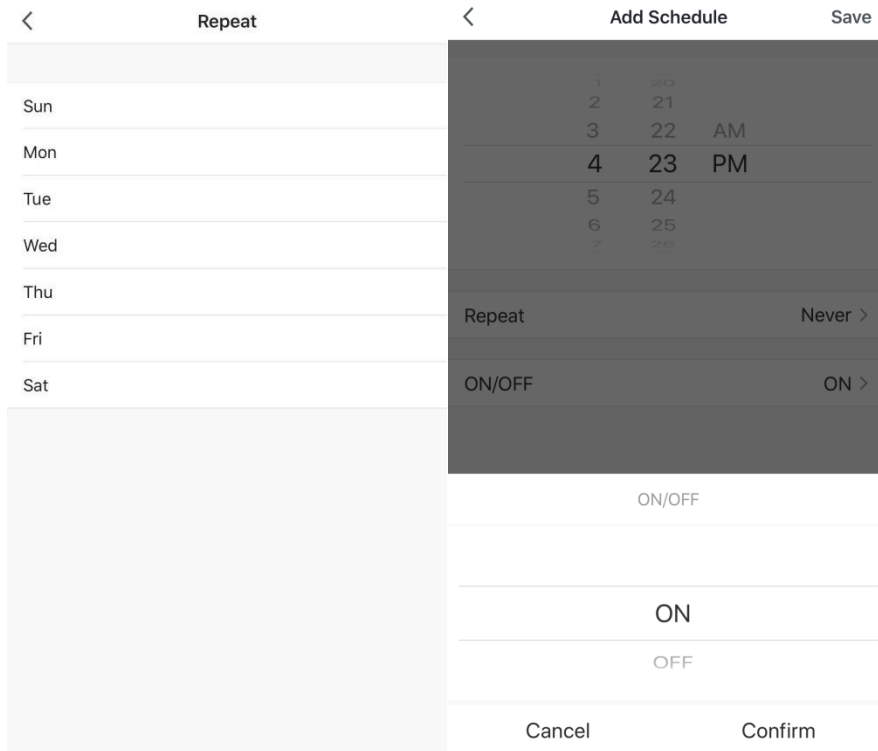




- **Timing settings**



Click “” in the main interface of the device operation to enter the timing setting interface, as shown below, click Add Timing; Enter the timing setting, slide the hour/minute up and down to set the timing time, and set the repeating date and on/off, press the upper right corner to save, as shown in the below pictures;










- **Remove Device**

- ✓ Remove device by controller

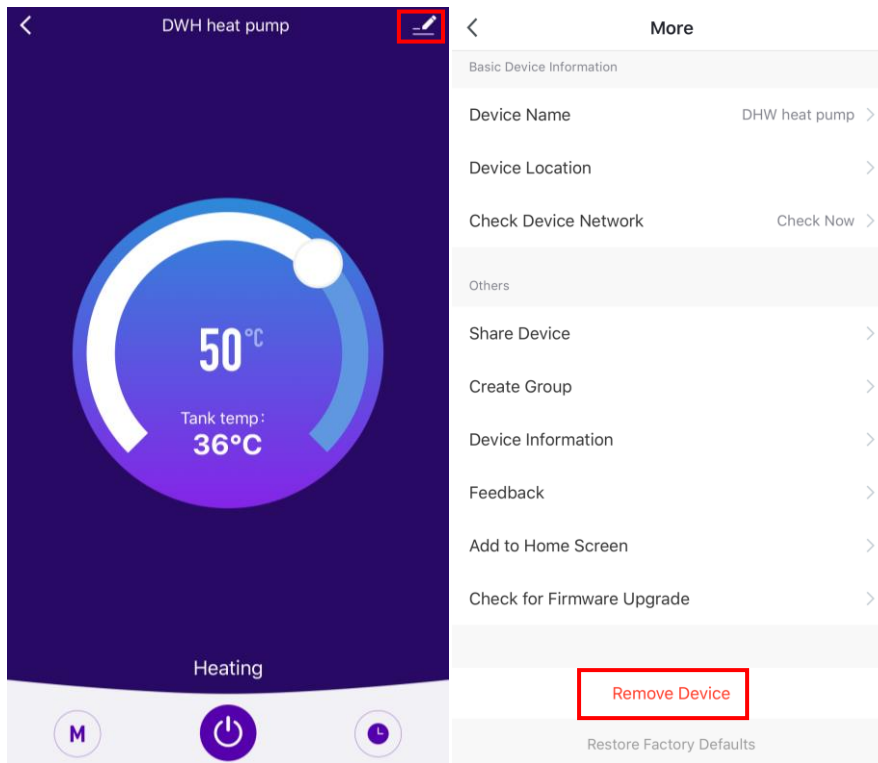
1) When the device has been added by intelligent network connection mode, need to remove the device, press button  and button “▲” for 5 seconds at the same time. The device will be removed and re-enter into intelligent network connection mode. The  icon will blink for 3 minutes. The network can be reconfigured within 3 minutes. After 3 minutes, the intelligent network connection mode will exit.

2) When the device has been added by AP network connection mode, need to remove the device, press buttons “▼”++ for 5 seconds at the same time. The device will be removed and re-enter into AP network connection mode. The  icon will blink for 3 minutes. The network can be reconfigured within 3 minutes. After 3 minutes, the AP network connection mode will exit.

- ✓ Remove device by APP

Click  in the upper right corner of the device operation interface to enter the device details interface. Click “Remove device”, device will be removed and it enters into intelligent network connection mode. The  icon will blink for 3 minutes, and the network can be reconfigured

within 3 minutes. After 3 minutes, the intelligent network connection mode will exit.





**ZANTIA<sup>®</sup>**

Inspired by *Comfort!*

[WWW.ZANTIA.COM](http://WWW.ZANTIA.COM)