

## AF/ARMAFLEX

### Refrigeração | Ar Condicionado

#### Descrição do Produto

Primeiro isolamento flexível com DECLARAÇÃO AMBIENTAL DE PRODUTO (EPD). Excelente resistência à difusão de vapor de água e proteção antimicrobiana incorporada MICROBAN®.

Ampla gama de produtos com espessuras de acordo com o regulamento R.E.C.S. Condutividade térmica estável para eficiência energética a longo prazo.

**Nota: Toda a gama é vendida à CAIXA COMPLETA.**



**Barras 2Mt (AF-1)**  
7,0-10mm

Código	Espessura
0815-0101*	7x6 (Cx.360Mt)
0815-0102*	7,5x10 (Cx.300M)
0815-0104*	7,5x12 (Cx.234M)
0815-0105*	8x15 (Cx.192Mt)
0815-0106*	8x18 (Cx.140Mt)
0815-0107*	8,5x22 (Cx.132M)
0815-0108*	8,5x25 (Cx.108M)
0815-0109*	8,5x28 (Cx.100M)
0815-0110*	9x35 (Cx.76Mt)
0815-0111*	9x42 (Cx.60Mt)
0815-0112*	9x48 (Cx.50Mt)
0815-0113*	9x54 (Cx.48Mt)
0815-0114*	9x60 (Cx.36Mt)
0815-0115*	9,5x64 (Cx.32Mt)
0815-0117*	9,5x76 (Cx.28Mt)
0815-0118*	9,5x89 (Cx.22Mt)
0815-0119*	9,5x114 (Cx.16M)

\*Sob encomenda especial



**Barras 2Mt (AF-2)**  
9,5-16mm

Código	Espessura
0815-0120*	9,5x6 (Cx.288Mt)
0815-0121*	11x10 (Cx.170Mt)
0815-0200*	11x12 (Cx.168Mt)
0815-0122*	11,5x15 (Cx.130)
0815-0123*	11,5x18 (Cx.120)
0815-0124*	12x22 (Cx.100Mt)
0815-0125*	12,5x22 (Cx.88M)
0815-0126*	12,5x28 (Cx.84M)
0815-0127*	13x35 (Cx.64Mt)
0815-0128*	13,5x42 (Cx.64M)
0815-0129*	13,5x48 (Cx.44M)
0815-0130*	13,5x54 (Cx.36M)
0815-0131*	14x60 (Cx.32Mt)
0815-0132*	14x64 (Cx.30Mt)
0815-0133*	14x76 (Cx.28Mt)
0815-0134*	14,5x89 (Cx.22M)
0815-0135*	14,5x102 (Cx18M)
0815-0136*	15x114 (Cx.16Mt)

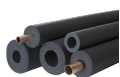
\*Sob encomenda especial



**Barras 2Mt (AF-3)**  
12,5-19mm

Código	Espessura
0815-0137*	12,5x10 (Cx156M)
0815-0138*	13x12 (Cx144Mt)
0815-0139*	14x15 (Cx108Mt)
0815-0140*	14x18 (Cx96Mt)
0815-0141*	14,5x22 (Cx84Mt)
0815-0143*	15,5x28 (Cx64Mt)
0815-0144*	16x35 (Cx46Mt)
0815-0145*	16,5x42 (Cx40Mt)
0815-0146*	16,5x48 (Cx32Mt)
0815-0147*	17x54 (Cx28Mt)
0815-0148*	17x60 (Cx24Mt)
0815-0149*	17x64 (Cx20Mt)
0815-0150*	17,5x76 (Cx16Mt)
0815-0151*	18x89 (Cx16Mt)
0815-0153*	18,5x114 (Cx12M)

\*Sob encomenda especial



**Barras 2Mt (AF-4)**  
15,5-25mm

Código	Espessura
0815-0154*	15,5x10 (Cx110M)
0815-0155*	16x12 (Cx100Mt)
0815-0156*	17x15 (Cx88Mt)
0815-0157*	17,5x18 (Cx70Mt)
0815-0158*	18x22 (Cx60Mt)
0815-0159*	18,5x25 (Cx56Mt)
0815-0160*	19x28 (Cx48Mt)
0815-0161*	19,5x35 (Cx36Mt)
0815-0162*	20,5x42 (Cx32Mt)
0815-0163*	21x48 (Cx24Mt)
0815-0164*	21x54 (Cx24Mt)
0815-0165*	21,5x60 (Cx20Mt)
0815-0166*	21,5x64 (Cx18Mt)
0815-0167*	22x76 (Cx16Mt)
0815-0168*	22,5x89 (Cx12Mt)
0815-0169*	23x102 (Cx10Mt)
0815-0170*	23,5x114 (Cx10M)
0815-0245*	24,5x140 (Cx6Mt)
0815-0172*	25x160 (Cx6Mt)

\*Sob encomenda especial



**Barras 2Mt (AF-5)**  
25-32mm

Código	Espessura
0815-0174*	25x18 (Cx.42Mt)
0815-0175*	25x22 (Cx.36Mt)
0815-0176*	25x28 (Cx.36Mt)
0815-0177*	27x35 (Cx.24Mt)
0815-0178*	27x42 (Cx.22Mt)
0815-0179*	27,5x48 (Cx.16M)
0815-0180*	28,5x54 (Cx.16M)
0815-0181*	29x60 (Cx.12Mt)
0815-0182*	29x64 (Cx.12Mt)
0815-0183*	30x76 (Cx.10Mt)
0815-0184*	30,5x89 (Cx.8Mt)
0815-0185*	31,5x114 (Cx.6M)
0815-0246*	32x140 (Cx.6Mt)
0815-0247*	32x168 (Cx.4Mt)

\*Sob encomenda especial



**Barras 2Mt (AF-6)**  
32-45mm

Código	Espessura
0815-0187*	32x15 (Cx32Mt)
0815-0188*	32x18 (Cx32Mt)
0815-0189*	33,5x22 (Cx28Mt)
0815-0190*	35x28 (Cx24Mt)
0815-0191*	35x35 (Cx18Mt)
0815-0192*	36,5x42 (Cx16Mt)
0815-0193*	37,5x48 (Cx12Mt)
0815-0194*	38x54 (Cx12Mt)
0815-0195*	39x60 (Cx10Mt)
0815-0196*	39,5x64 (Cx10Mt)
0815-0197*	40,5x76 (Cx8Mt)
0815-0198*	41,5x89 (Cx6Mt)
0815-0199*	43x114 (Cx4Mt)
0815-0248*	44,5x140 (Cx4Mt)
0815-0171*	45x160 (Cx4Mt)
0815-0249*	45x168 (Cx4Mt)

\*Sob encomenda especial



# REFRIGERAÇÃO E AR CONDICIONADO

**R.E.C.S.**

**Barras 2Mt R.E.C.S. Interior (Tª 0 a 10°C)**

Código	Diâmetro
0815-0157*	17,5x18 (Cx70Mt)
0815-0158*	18x22 (Cx60Mt)
0815-0160*	19x28 (Cx48Mt)
0815-0161*	19,5x35 (Cx36Mt)
0815-0178*	27x42 (Cx.22Mt)
0815-0179*	27,5x48 (Cx.16M)
0815-0180*	28,5x54 (Cx.16M)
0815-0181*	29x60 (Cx.12Mt)
0815-0182*	29x64 (Cx.12Mt)
0815-0183*	30x76 (Cx.10Mt)
0815-0184*	30,5x89 (Cx.8Mt)

\*Sob encomenda especial

**R.E.C.S.**

**Barras 2Mt R.E.C.S. Exterior (Tª 66 a 100°C)**

Código	Diâmetro
0815-0192*	36,5x42 (Cx16Mt)
0815-0193*	37,5x48 (Cx12Mt)
0815-0194*	38x54 (Cx12Mt)
0815-0195*	39x60 (Cx10Mt)
0815-0196*	39,5x64 (Cx10Mt)
0815-0197*	40,5x76 (Cx8Mt)
0815-0198*	41,5x89 (Cx6Mt)
0815-0199*	43x114 (Cx4Mt)
0815-0248*	44,5x140 (Cx4Mt)
0815-0171*	45x160 (Cx4Mt)
0815-0249*	45x168 (Cx4Mt)

\*Sob encomenda especial


**Barras 2Mt Auto-Adesivas (AF-3) 13,5 - 17,5mm**

Código	Espessura
0815-0223*	13,5x15 (Cx108M)
0815-0224*	14x18 (Cx96Mt)
0815-0225*	14,5x22 (Cx84Mt)
0815-0226*	15,5x28 (Cx64Mt)
0815-0227*	16x35 (Cx46Mt)
0815-0228*	16,5x42 (Cx40Mt)
0815-0229*	16,5x48 (Cx32Mt)
0815-0230*	17x54 (Cx28Mt)
0815-0231*	17,5x60 (Cx24Mt)
0815-0232*	17,5x76 (Cx16Mt)
0815-0233*	18x89 (Cx16Mt)

\*Sob encomenda especial

**R.E.C.S.**

**Barras 2Mt R.E.C.S. Exterior (Tª 0 a 10°C)**

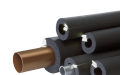
Código	Diâmetro
0815-0192*	36,5x42 (Cx16Mt)
0815-0193*	37,5x48 (Cx12Mt)
0815-0194*	38x54 (Cx12Mt)

\*Sob encomenda especial


**Barras 2Mt Auto-Adesivas (AF-1) 8 - 9,5mm**

Código	Espessura
0815-0201*	8x15 (Cx192Mt)
0815-0202*	8x18 (Cx140Mt)
0815-0203*	8,5x22 (Cx132Mt)
0815-0204*	8,5x28 (Cx100Mt)
0815-0205*	9x35 (Cx76Mt)
0815-0206*	9x42 (Cx60Mt)
0815-0207*	9x54 (Cx50Mt)
0815-0208*	8x15 (Cx48Mt)
0815-0209*	9x60 (Cx36Mt)
0815-0210*	9,5x76 (Cx28Mt)
0815-0211*	9,5x89 (Cx22Mt)

\*Sob encomenda especial


**Barras 2Mt Auto-Adesivas (AF-4) 17 - 25mm**

Código	Espessura
0815-0234*	17x15 (Cx88Mt)
0815-0235*	17,5x18 (Cx70Mt)
0815-0236*	18x22 (Cx60Mt)
0815-0237*	19x28 (Cx48Mt)
0815-0238*	19,5x35 (Cx36Mt)
0815-0239*	20,5x42 (Cx32Mt)
0815-0240*	21x48 (Cx24Mt)
0815-0241*	21x54 (Cx24Mt)
0815-0242*	21,5x60 (Cx20Mt)
0815-0243*	22x76 (Cx16Mt)
0815-0244*	22,5x89 (Cx12Mt)

\*Sob encomenda especial

**R.E.C.S.**

**Barras 2Mt R.E.C.S. Exterior (Tª 40 a 60°C)**

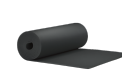
Código	Diâmetro
0815-0178*	27x42 (Cx.22Mt)
0815-0179*	27,5x48 (Cx.16M)
0815-0180*	28,5x54 (Cx.16M)
0815-0181*	29x60 (Cx.12Mt)
0815-0182*	29x64 (Cx.12Mt)
0815-0183*	30x76 (Cx.10Mt)
0815-0184*	30,5x89 (Cx.8Mt)

\*Sob encomenda especial


**Barras 2Mt Auto-Adesivas (AF-2) 11,5 - 14,5mm**

Código	Espessura
0815-0212*	11,5x15 (Cx130M)
0815-0213*	11,5x18 (Cx120M)
0815-0214*	12x22 (Cx100Mt)
0815-0215*	12,5x28 (Cx84Mt)
0815-0216*	13x35 (Cx62Mt)
0815-0217*	13,5x42 (Cx48Mt)
0815-0218*	13,5x48 (Cx44Mt)
0815-0219*	13,5x54 (Cx36Mt)
0815-0220*	14x60 (Cx32Mt)
0815-0221*	14x76 (Cx28Mt)
0815-0222*	14,5x89 (Cx22Mt)

\*Sob encomenda especial


**Pranchas Standard 1Mt**

Código	Espessura
0815-0301*	6mm (Cx. 15Mt)
0815-0302*	10mm (Cx. 10Mt)
0815-0303*	13mm (Cx. 8Mt)
0815-0304*	19mm (Cx. 6Mt)
0815-0305*	25mm (Cx. 4Mt)
0815-0306*	32mm (Cx. 3Mt)
0815-0307*	36mm (Cx. 5Mt)
0815-0308*	50mm (Cx. 5Mt)

\*Sob encomenda especial




**Pranchas Auto-Adesivas  
1Mt**

Código	Espessura
0815-0309*	6mm (Cx. 15Mt)
0815-0310*	10mm (Cx. 10Mt)
0815-0311*	13mm (Cx. 8Mt)
0815-0312*	19mm (Cx. 6Mt)
0815-0313*	25mm (Cx. 4Mt)
0815-0314*	32mm (Cx. 3Mt)

\*Sob encomenda especial


**Cintas Auto-Adesivas  
50mm**

Código	Espessura
1703-0111*	15Mt
1703-0115*	30Mt

\*Sob encomenda especial

