

COLECTORES SOLARES



Gold Solar Colector

Principais Características

- Constructed in aluminium, designed to withstand winds over 150km/h and snow loads of 1,25 kN/m²;
- Absorber laser welded with highly selective coating and anti-corrosion protection;
- Intelligent ventilation system that stops sand and impurities from entering;*
- Great durability, and environment-friendly thanks to the recyclable materials used without emission of pollutant gases;
- Great performance • pressure ratio thanks to its intelligent design;
- Maximum precision thanks to its robotized construction line;
- High heat transfer between the absorption plate and the vertical tubes thanks to the laser welding technology;
- Easy to transport and assembly thanks to its low weight and profile;
- Tempered solar glass with low iron content, greater transparency and high resistance;
- It can be installed on balcony or roof thanks to its modular fixation system.

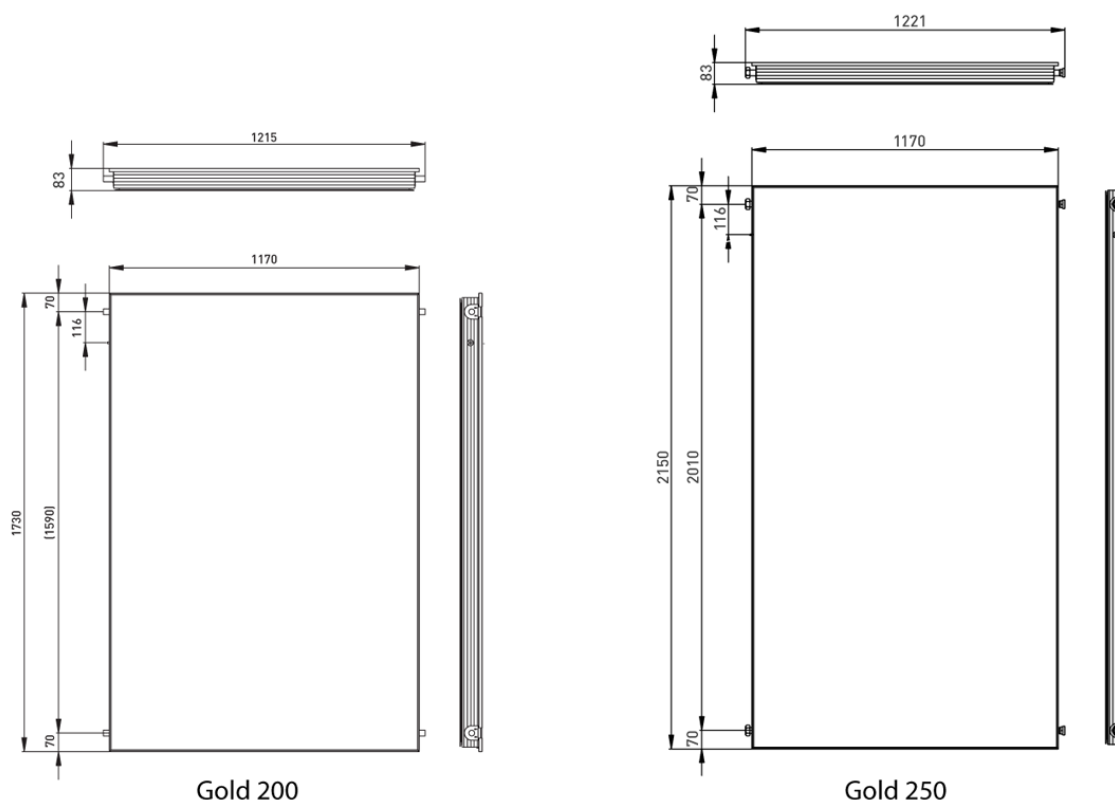
Descrição do Produto

Solar selective thermal collector, Solar Keymark certification and a 10-year warranty.

Modelos e Preços

Código	Modelo
2701-0108	Top Selective Solar Collector ZHS 200
2701-0122	Top Selective Solar Collector ZHS 250

Dimensões



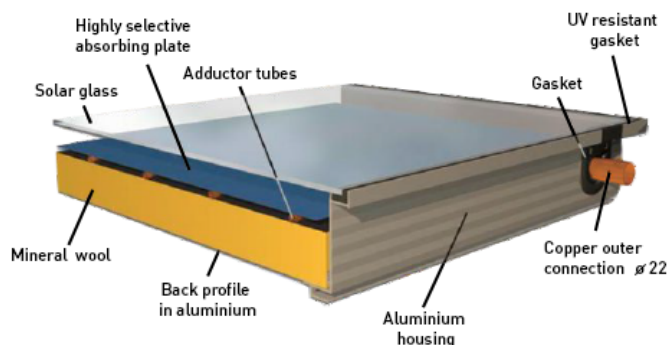
Componentes

ASSEMBLY OPTIONS

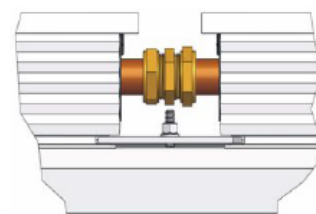
Balcony assembly



Roof assembly



ASSEMBLY IN SERIES



Detail of the union between two solar collectors

TECHNICAL DATA	GOLD 200	GOLD 250
Total area (m ²):	2,02	2,51
Absorser area (m ²):	1,84	2,30
Opening area (m ²):	1,92	2,39
Height x Width x Depth (mm):	1730 x 1170 x 83	2150 x 1170 x 83
Instantaneous performance (nr):	0,759	0,759
Loss coefficient at ₁ (W/m ² .k):	3,480	3,480
Loss coefficient at ₂ (W/m ² .k):	0,0161	0,0161
Fluid capacity (lts)	1,4	1,7
Absorption (%):	95	95
Emission (%):	5	5
Collectors tubes (mm)	22	22
Supply tubes (mm)	8	8
Connections	compression "22	compression "22
Glass:	tempered 3,2 mm	tempered 3,2 mm
Glass transmittance (%):	95	95
Thermal insulation	40 mm (mineral wool)	40 mm (mineral wool)
Max. Stagnation temperature (C):	234	234
Max. Service pressure: (bar)	6 10	6 10
Weight (kg)	35	42

